

Listening in Spirit: Parishioner Survey

As the family of parishes that make up the Anglican Diocese of Edmonton we are embarking on **Listening in Spirit | Shaping Our Future Together**, the discovery phase of the Finding Our Way strategic planning journey. This membership survey, together with other data gathered, will be used to gain insight into how each parish is flourishing and how it is struggling. We ask you to think about how your faith community helps you grow in faith, and what is inhibiting your growth.

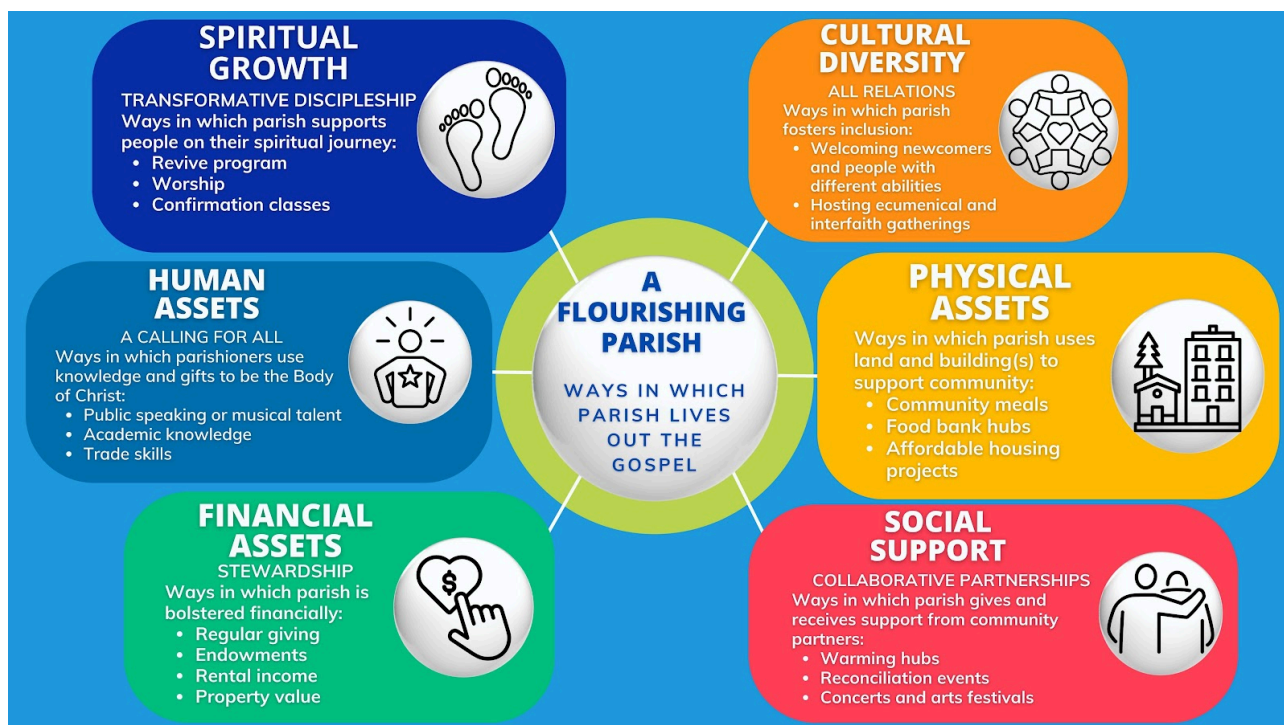
Thank you for taking the time to complete this survey. Please ask someone in your parish to scan the document and email it to **jfchesterton@gmail.com** by no later than April 24.

What is the name of your current parish? Please include the community, town or city.

Parish Assets

Assets are the building blocks of all communities, including church communities. The United Nations' Asset-Based Community Development framework identifies six types of assets that offer a holistic picture of the capabilities, resources, and strengths of communities. The approach asks, "What assets do we already have and how can we strengthen them?" These asset classes have been adapted to church communities and are captured below. Examples help show how they are experienced in church life. While no communities maximize all their assets all the time, parishes flourish when they tap into all the gifts, resources and strengths available to them.

Please study this diagram (Word doc on separate page) to understand the types of assets before you answer the questions that follow.



How would you rate the strength of your parish in the following areas? Please circle a rating for each aspect, on a scale of 1–10, where 1 = Very Weak and 10 = Very Strong.

Cultural Diversity – Fostering inclusion for all in church life.

1 2 3 4 5 6 7 8 9 10

Physical Resources – Using your land and building to support community.

1 2 3 4 5 6 7 8 9 10

Social Supports – Mutually uplifting relationships with neighbours (collaborative partnerships).

1 2 3 4 5 6 7 8 9 10

Financial Assets – Sustaining revenues and maintaining property values.

1 2 3 4 5 6 7 8 9 10

Human Assets – Tapping into parishioners' skills, knowledge and talents.

1 2 3 4 5 6 7 8 9 10

Discipleship – Supporting parishioners on their spiritual journey.

1 2 3 4 5 6 7 8 9 10

What is important for us to understand about your parish before we begin our strategic planning process?

A Flourishing Parish - Ways in Which Parish Lives Out the Gospel

Please think about the following asset classes when answering the questions on the survey.

Spiritual Growth | Transformative Discipleship

- Ways in which parish supports people on their spiritual journey
- Eg. Revive Program, worship, confirmation classes

Cultural Diversity | All Relations

- Ways in which parish fosters inclusion
- Eg. Welcoming newcomers and people with different abilities, hosting ecumenical and interfaith gatherings

Physical Assets

- Ways in which parish uses land and building(s) to support community
- Eg. Community meals, food bank hubs, affordable housing projects

Social Support | Collaborative Partnerships

- Ways in which parish gives and receives support from community partners
- Eg. Warming hubs, reconciliation events, concerts and arts festivals

Financial Assets | Stewardship

- Ways in which parish is bolstered financially
- Eg. Regular giving, endowments, property value, rental income

Human Assets | A Calling for All

- Ways in which parishioners use knowledge and gifts to be the body of Christ
- Eg. Public speaking or musical talent, academic knowledge, trade skills